

Welcome to American Prairie.

It is yours to explore.

Get a digital version of this map with the Avenza Maps app.

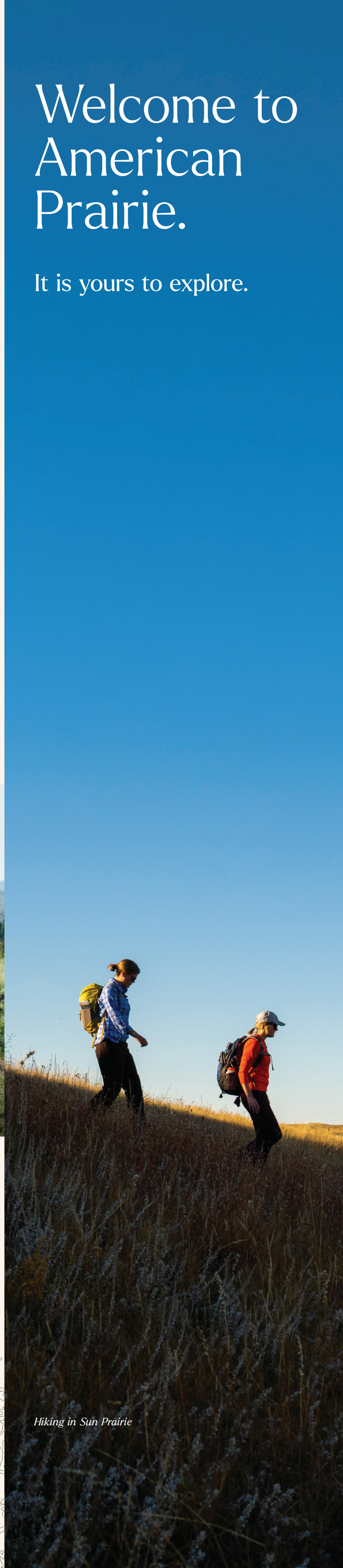


WILD ABOUT NATURE, WILDLIFE, DISCOVERY, THE PRAIRIE.



AMERICAN PRAIRIE

MAP & GUIDE



Hiking in Sun Prairie

Visiting the Prairie

Stunning vistas and unique topography provide an impressive backdrop for recreation. American Prairie has a truly rugged quality and a sense of uninterrupted nature. Discover the power of dark skies, and remote, unbroken land. Each visit offers something new whether you are on foot, wheels, or horseback. Two-track, non-motorized roads across the prairie are great for hiking, biking, and horseback riding. Keep an eye out for migrating species of birds, herds of elk, bison and pronghorn. American Prairie deeded land may be accessed at any time without written or oral permission anywhere outside of a designated wildlife area or special management area.

Hitting the Trail

Motorized vehicles may be driven on any designated roads indicated on the map. E-Bikes are considered motorized and must adhere to motorized roads. Note that all roads may be impassable when wet.

Pets

Dogs are allowed on leash or under voice control on all American Prairie properties.

Horses and pack animals may access properties with certified weed-free hay. Panels are recommended for overnight livestock accommodations.

Dispersed Camping

Tents must be set up at least ¼ mile off any road, ½ mile from any structures/dwellings, 200 ft from bodies of water for up to 3 nights. Tents only (no campers), no fires, follow Leave No Trace guidelines.

Natural Resource Collection

The collection of bison bones or skulls, human artifacts or firewood is prohibited. Guests may collect antler sheds for non-commercial use, up to 2 per day.

Hunting Access

Hunting access is managed through Montana Fish, Wildlife and Parks' Block Management Program (over 80,000 acres enrolled) or through internal American Prairie Public Access Programs. American Prairie properties may be crossed (on foot or designated motorized road) to access adjacent public land for hunting with or without a Block Management reservation, anywhere outside of a designated Wildlife Area or private residential area. Visit americanprairie.org/hunting for more information.

Safety and Well-Being

American Prairie is situated in a remote location where services (including cell phone coverage) are extremely limited. Be prepared to self-rescue and remember that American Prairie is not responsible for any damage or harm done to your vehicle, belongings, or person while you are on American Prairie property.

Water

Bring enough drinking water for the duration of your stay plus extra just in case. There is no potable water available on American Prairie property at this time, unless where specified in association with camping.

Vehicle

Visit in a reliable four-wheel-drive vehicle with at least 8 inches of clearance and a full tank of gas. Roads are primarily dirt and gravel, and often are unmaintained. Check the forecast and avoid driving in wet conditions. Heavy rains mix with bentonite clay found in the soil to produce a very slippery and sticky driving surface, also known as "gumbo." Many roads become impassable when wet. Check your spare prior to your visit, pack a patch kit and pressure gauge, and do not drive off designated roads.

Fire

Dry conditions, strong winds, and low humidity create potential for grass fires, regardless of season. Wildfires can start from a campfire outside a designated fire ring, a cigarette that has not been properly extinguished, a vehicle undercarriage, or lightning strikes.

Wildlife & Livestock

Do not approach any animals, including bison, and always view from a safe distance (100 yards). When hiking, be aware of your surroundings and pay special attention to the ground to avoid contact with rattlesnakes (the only venomous snake in the region). American Prairie includes occupied bear habitat and we encourage all visitors to be bear-aware. American Prairie includes active ranching operations; do not approach livestock and leave all fence gates as you find them.



Enjoy bison from a safe distance: 100 yards



American Prairie is a nonprofit dedicated to creating the largest wildlife reserve in the contiguous United States.

American Prairie's approach is rooted in collaboration and respect for the land's history. By linking public lands with purchased private parcels, the organization is building a connected habitat base that balances conservation, recreation, and cultural heritage. Visitors to the prairie can hike, camp, and observe wildlife while gaining a deeper understanding of the landscape's ecological and historical importance.

Globally, there are only four remaining places where large-scale prairie conservation is still possible: Kazakhstan, Mongolia, Patagonia, and the Northern Great Plains. Of these, Montana's Northern Great Plains is the only location within the United States. This makes prairie not just a regional treasure, but a landscape of international ecological significance. Supporters make a tangible impact on the flora and fauna that thrive in the Northern Great Plains of Montana. Through your gift to American Prairie, you are helping us conserve and restore this shortgrass prairie ecosystem for generations to come.



Riverboat along the Missouri River



Hunting on White Rock



Camping along the Missouri River

KNOW BEFORE YOU GO

Be Prepared

Many of our properties are as remote as they are rugged. It is important to plan ahead and come prepared. You may be miles from water, food, or assistance, with limited cell coverage and no on-site staff. Pack what you need, share your plans, and be ready to be self-reliant.

Gear Up

	Drinking Water		Binoculars
	First Aid Kit		Sunscreen
	Dry / Canned Food		Bug Spray
	Flashlight or Headlamp		Download a digital version of this map from Avenza Maps.
	GPS Phone App		
	Hiking Boots / Sturdy Shoes		
	Wind/Rain Jacket		

Book a Campsite

Ready to book your next prairie adventure? Use the QR codes to find campsite reservations, hut stays, and trip planning details.



Antelope Creek Campground



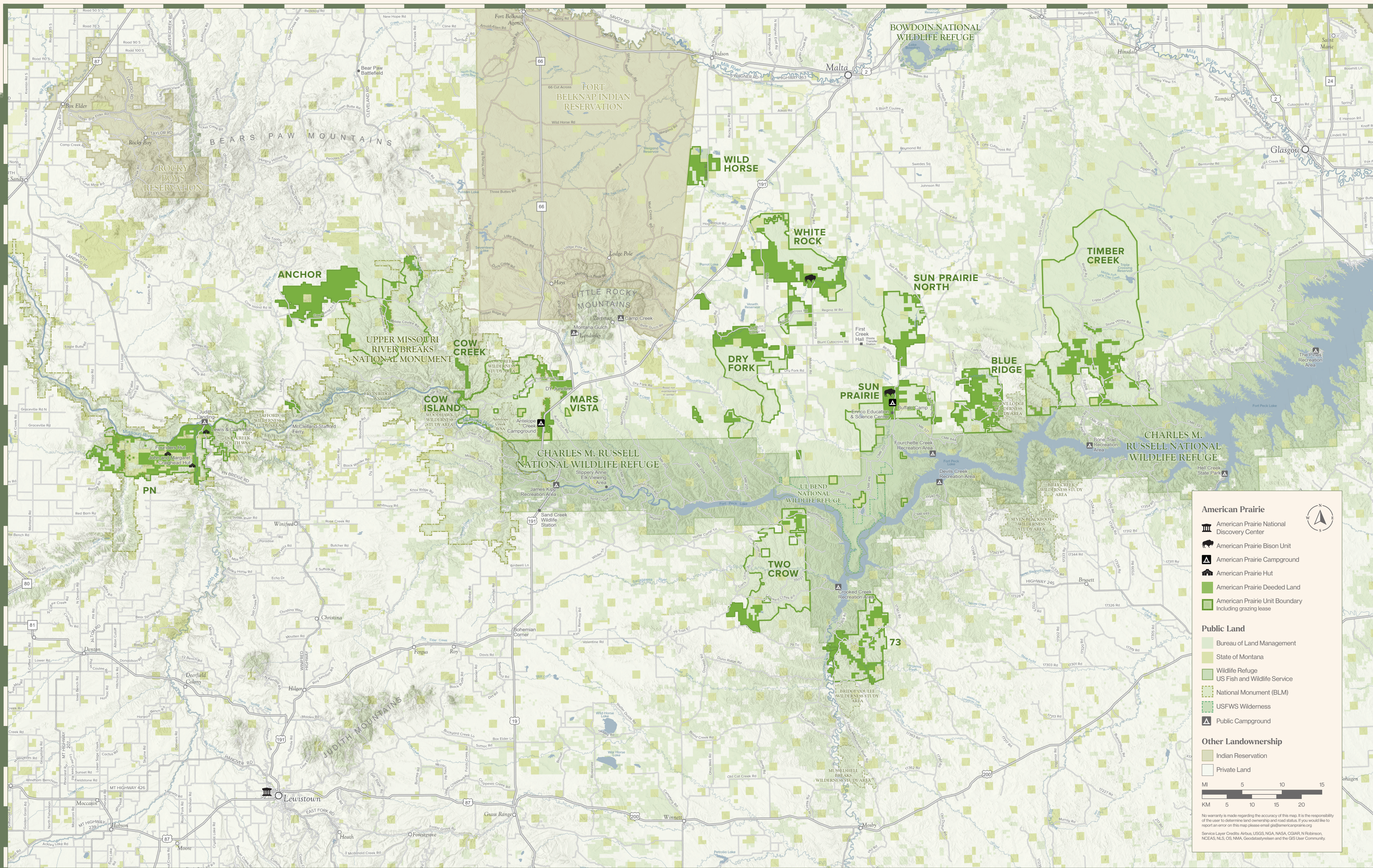
Buffalo Camp



Myers Family Huts



Dispersed Camping



American Prairie

- American Prairie National Discovery Center
- American Prairie Bison Unit
- American Prairie Campground
- American Prairie Hut
- American Prairie Deeded Land
- American Prairie Unit Boundary Including grazing lease

Public Land

- Bureau of Land Management
- State of Montana
- Wildlife Refuge
- US Fish and Wildlife Service
- National Monument (BLM)
- USFWS Wilderness
- Public Campground

Other Landownership

- Indian Reservation
- Private Land

Mileage scale: 0, 5, 10, 15 miles / 0, 5, 10, 15 kilometers

No warranty is made regarding the accuracy of this map. It is the responsibility of the user to determine land ownership and road status. If you would like to report an error on this map please email: gis@americanprairie.org

Service Layer Credits: Aerial: USGS; NGA; NASA; CCGAR; N Robinson; NCEAS; NLS; OS; NMA; GeospatialSystem and the GIS User Community

DISCOVERY AWAITS

Plan your trip with basecamps built for adventure.



National Discovery Center

302 W Main St, Lewistown
View interactive exhibits on the prairie ecosystem, watch short films about bison and prairie animals, meet Bandit, the Black Footed Ferret, and talk to one of our informed staff members about the organization.



Antelope Creek Campground

Mars Vista | 1.5 hrs from Lewistown
Visit the prairie without leaving pavement. Hike the 2-mile interpretive nature trail, enjoy chirping prairie dogs, and marvel at the starlit night sky. Reserve an RV, tent site, or book a cabin or tipi to stay overnight and immerse yourself in the prairie.



Buffalo Camp

Sun Prairie | 2.5 hrs from Lewistown
Book a campsite for your RV or pitch a tent on the Sun Prairie Unit. Camp among bison and explore the hiking and biking trails and motorized roads this property has to offer. Visit the Prairie Union School house to immerse yourself in the history of the area, or find a perfect spot on the prairie for a picnic.



Myers Family Huts

PN | 1 hr from Lewistown
Looking for a more rugged adventure? Reserve a stay at one of three Myers Family Huts. These are waterless, solar-powered huts that provide simple and comfortable accommodations on the PN property. Countless recreational opportunities await on the PN, ranging from canoeing, wildlife watching, horseback riding, biking, fishing, hunting, and so much more.



Charles M. Russell National Wildlife Refuge
At approximately 1.1 million acres, the Charles M. Russell National Wildlife Refuge is the second largest national wildlife refuge in the lower 48 states, stretching 125 miles along the Missouri River and surrounding Fort Peck Reservoir. The refuge harbors elk, mule deer, pronghorn, bighorn sheep, bald eagles, and sharp-tailed grouse. Recreational opportunities include hunting, fishing, boating, hiking, camping, horseback riding, and a self-guided auto tour off Highway 191. Each fall, hundreds of elk gather at the Slippery Ann Wildlife Viewing Area. The Fort Peck Interpretive Center serves as the visitor center, featuring native fish aquariums, wildlife displays, and dinosaur fossil casts. Managed by the U.S. Fish & Wildlife Service. fws.gov/refuge/charles-m-russell

Upper Missouri River Breaks National Monument
Established in 2001, the Upper Missouri River Breaks National Monument encompasses approximately 377,000 acres of BLM-managed public land in central Montana. The 149-mile Upper Missouri National Wild and Scenic River flows through the monument, largely unchanged since Lewis and Clark passed through in 1805. Wildlife abounds, including elk, mule deer, pronghorn, bald eagles, and a renowned bighorn sheep herd of roughly 900 animals. Recreation opportunities include floating the Wild and Scenic River, hiking, hunting, fishing, and camping at sites along the Missouri River. Begin your visit at the Upper Missouri River Breaks Interpretive Center in Fort Benton for maps and trip planning. Managed by the Bureau of Land Management: blm.gov/visit/upper-missouri-river-breaks-national-monument

Driving Time (Hrs.)

	Sun Prairie	PN
Billings	4	3.5
Bozeman	5.5	4.5
Glasgow	3	4
Great Falls	4	2.5
Havre	3	2
Helena	6	4
Kalispell	7	6

Nearby Airports

Code	City	Lewistown
BIL	Billings Logan	3
BZN	Bozeman Yellowstone	1
GTF	Great Falls	8



AMERICAN PRAIRIE

406-585-4600 | P.O. Box 908 | Bozeman, MT 59771
AmericanPrairie.org

Photos by Diane Hargreaves, Dennis Lingohr, Max Lowe, Reid Morth, Gib Myers, Logan Watts, and Gordon Wiltsie.