

Give today at americanprairie.org/give

Through your gift to American Prairie, you are helping us restore and protect the shortgrass prairie ecosystem for generations to come.

possibilities in the near and distant future.

We invite you to join us in this movement of ecosystem preservation and restoration, funded entirely by everyday philanthropists like you. Every dollar donated to American Prairie makes a tangible impact to the flora and fauna that thrive in the Northern Great Plains of Montana, and is an investment in the incredible possibilities in the near and distant future.

Now is the time to build American Prairie. development, spirit, and ecological diversity of America. the time to save the pivotal landscape that shaped the seamless ecosystem removed for its wildlife. Now is time to secure the future of the prairie and restore a special place that is largely unimpacted and intact. As land use patterns shift in the region, now is the time to secure the future of the prairie and restore a special place that is largely unimpacted and intact. on Earth. Much of the native prairie and its wildlife has disappeared over time, but the good stewardship of Temperate grasslands are the least protected biome

only place in the United States.

home to American Prairie in Montana—is the ecosystem, and the Northern Great Plains—where we can save an entire prairie grassland Those four places are the last in the world Kazakhstan, Mongolia, **The Northern Great Plains.** Patagonia.



WELCOME TO AMERICAN PRAIRIE

THE VISION

Established in 2001, American Prairie represents a bold effort to create the largest wildlife reserve in the lower 48. By linking together more than three million acres of private and public land, American Prairie will conserve a significant portion of the iconic landscape that once dominated central North America – Montana’s legendary Northern Great Plains.

Herds of elk, deer, pronghorn, and bison once roamed these grasslands in great numbers. When complete, American Prairie will provide critical habitat for a variety of species, offering visitors the opportunity to experience nature and wildlife as it existed when Lewis and Clark first explored the region and as Indigenous Peoples experienced it for thousands of years.

WHY HERE AND WHY NOW

Temperate grasslands are the least protected biome on Earth, with only four places left in the world that are viable options for landscape-scale conservation. One of those places is the Northern Great Plains, a landscape that shaped America’s history.

With an estimated two-thirds of the nation’s mixed- and short-grass prairies already lost to development, surviving grasslands have the potential for incredible biodiversity and discovery. Much of the native prairie and its wildlife has disappeared over time, but the good stewardship of the landowners in the American Prairie area has resulted in a special place that is largely unimpacted and intact. As land-use patterns shift in the region, now is the time to secure the future of the prairie and restore a seamless ecosystem renowned for its wildlife.



VISITOR ACTIVITIES

Stunning vistas and unique topography provide an impressive backdrop for recreation. American Prairie has a truly rugged quality and a sense of uninterrupted nature. Discover the power of dark skies, and remote, unbroken land. Each visit offers something new whether you are on foot, wheels, or horseback.

HITTING THE TRAIL
Explore the vastness of the landscape, smell the sage, and listen to birds call. Enjoy hiking, biking, and horseback riding on two-track roads.

DRIVING TOURS
In addition to the county roads and two-tracks that cross American Prairie lands, roads 201, 321, and 844 in the Charles M. Russell National Wildlife Refuge (CMR) are suggested for driving tours. Many roads in the region are not signed; a GPS or GPS phone app with preloaded maps is highly recommended. See the back of this map for a QR code to a free digital GPS version of this map.

WILDLIFE AND BISON VIEWING
Observe prairie dog behavior or keep an eye out for the many species of migrating birds traveling through American Prairie land. Spot elk, bison, and pronghorn, and look for hawks and eagles overhead.

PHOTOGRAPHY
From spectacular sunsets and the dazzling night sky to unique wildlife behavior and beautiful blooming flowers, the prairie offers vast opportunities for amateur or professional photographers.

HUNTING
Tens of thousands of acres owned by American Prairie are available for hunting via Montana Fish, Wildlife and Park’s Block Management program. Access is also available to adjacent and landlocked public land. Check americanprairie.org/hunting for the most up-to-date hunting information.

CAMPING
Several public facilities are available including tent camping, huts with kitchens and bunks, RV spaces with full hookups, sleeping cabins, and shower facilities. See the reverse side of the map for locations. Make reservations online at americanprairie.org/visit. Dispersed tent camping is also permitted on American Prairie land. See americanprairie.org/camping-on-public-lands for guidelines.

BIKING
Bikers will find a great variety of riding on the American Prairie property. There are innumerable two-tracks to explore on day trips, as well as potential to create multi-day bikepacking routes through American Prairie, state, and federal lands. E-bikes are allowed on motorized travel routes. Bring a full repair kit and bike pump.

NATIONAL DISCOVERY CENTER
Visit the National Discovery Center at 302 W Main Street in Lewistown on your way to the prairie. The Center features interactive exhibits about the prairie ecosystem, community meeting spaces, and a film theater. Check americanprairie.org/national-discovery-center for hours and more information.

SAFETY AND WELL-BEING

American Prairie is situated in a remote location where services (including cell phone coverage) are extremely limited. Be prepared to self-rescue and remember that American Prairie is not responsible for any damage or harm done to your vehicle, belongings, or person while you are on American Prairie property.

GEAR
Visitors should prepare for a range of weather conditions. We recommend layering clothing and wearing sturdy shoes. We also recommend bringing a wind and rainproof jacket, a sun hat, water (see below), food, binoculars, a camera, a first aid kit, a flashlight or headlamp, sunscreen, and bug spray. Many roads in the region are not signed; a GPS or GPS phone app with preloaded maps is highly recommended. See the back of this map for a QR code to a free digital GPS version of this map.

WATER
Bring enough drinking water for the duration of your stay plus extra just in case. There is no potable water available on American Prairie property at this time, unless where specified in association with camping.

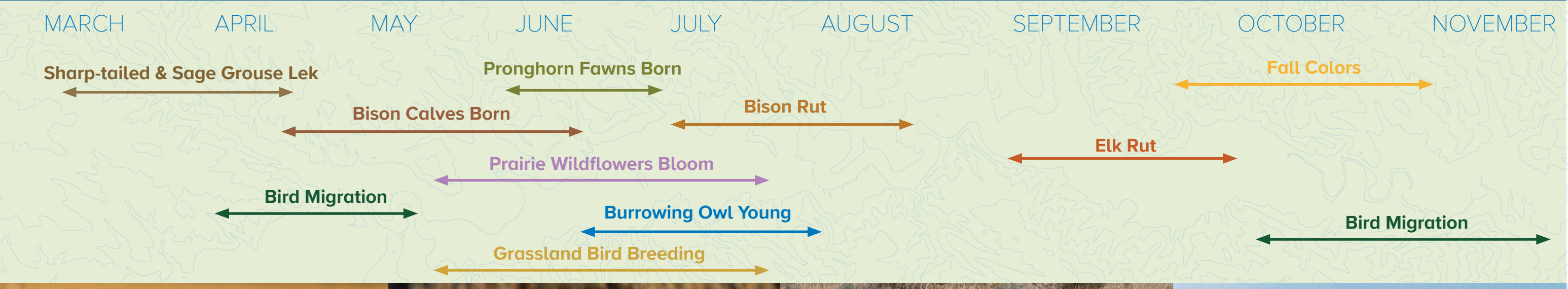
VEHICLE
Visit in a reliable four-wheel-drive vehicle with at least 8 inches of clearance and a full tank of gas. (See the opposite side of the map for recommendations on where to fill up before getting to American Prairie property). Roads are primarily dirt and gravel, and often are unmaintained. Check the forecast and avoid driving in wet conditions. Heavy rains mix with bentonite clay found in the soil to produce a very slippery and sticky driving surface, also known as “gumbo.” **Many roads become impassable when wet.** Check your spare prior to your visit, pack a patch kit and pressure gauge, and do not drive off designated roads. Visit americanprairie.org/road-and-weather-conditions for more information.

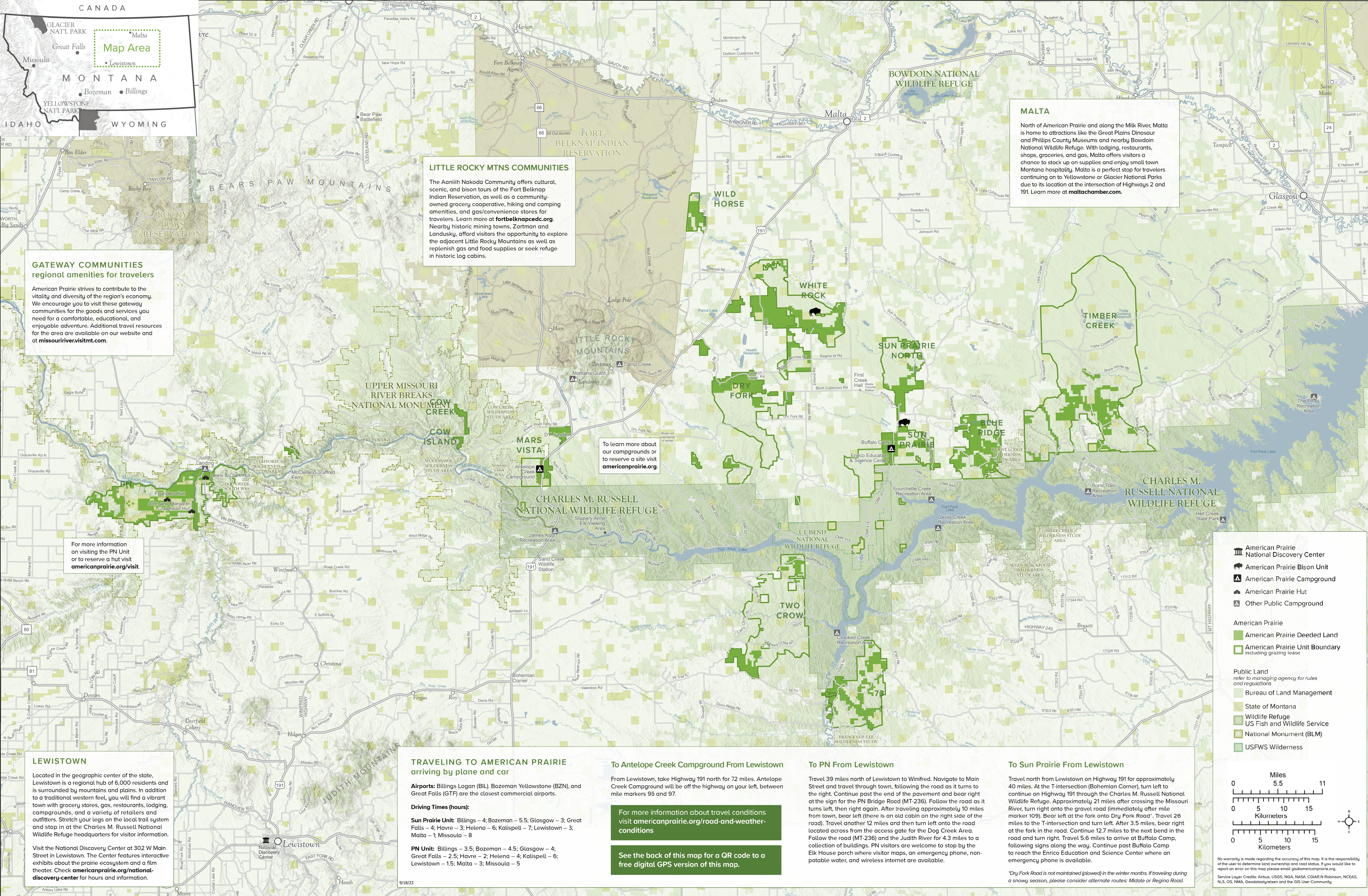
FIRE
Dry conditions, strong winds, and low humidity create potential for grass fires, regardless of season. Wildfires can start from a campfire outside a designated fire ring, a cigarette that has not been properly extinguished, a vehicle undercarriage, or lightning strikes. Check americanprairie.org/road-and-weather-conditions for the most up-to-date fire conditions on American Prairie land.

WILDLIFE & LIVESTOCK
Do not approach any animals, including bison, and always view from a safe distance (100 yards). When hiking, be aware of your surroundings and pay special attention to the ground to avoid contact with rattlesnakes (the only venomous snake in the region). American Prairie includes occupied bear habitat and we encourage all visitors to be bear-aware. American Prairie includes active ranching operations; do not approach livestock and leave all fence gates as you find them.



PRAIRIE & WILDLIFE TIMELINE





MALTA

North of American Prairie and along the Milk River, Malta is home to attractions like the Great Plains Dinosaur and Phillips County Museums and nearby Bowdoin National Wildlife Refuge. With lodging, restaurants, shops, groceries, and gas, Malta offers visitors a chance to stock up on supplies and enjoy small town Montana hospitality. Malta is a perfect stop for travelers continuing on to Yellowstone or Glacier National Parks due to its location at the intersection of Highways 2 and 191. Learn more at maltachamber.com.

LITTLE ROCKY MTNS COMMUNITIES

The Aaniiih Nakoda Community offers cultural, scenic, and bison tours of the Fort Belknap Indian Reservation, as well as a community-owned grocery cooperative, hiking and camping amenities, and gas/convenience stores for travelers. Learn more at fortbelknapcedc.org. Nearby historic mining towns, Zortman and Landusky, afford visitors the opportunity to explore the adjacent Little Rocky Mountains as well as replenish gas and food supplies or seek refuge in historic log cabins.

GATEWAY COMMUNITIES
regional amenities for travelers

American Prairie strives to contribute to the vitality and diversity of the region's economy. We encourage you to visit these gateway communities for the goods and services you need for a comfortable, educational, and enjoyable adventure. Additional travel resources for the area are available on our website and at missouririver.visitmt.com.

To learn more about our campgrounds or to reserve a site visit americanprairie.org.

For more information on visiting the PN Unit or to reserve a hut visit americanprairie.org/visit.

LEWISTOWN

Located in the geographic center of the state, Lewistown is a regional hub of 6,000 residents and is surrounded by mountains and plains. In addition to a traditional western feel, you will find a vibrant town with grocery stores, gas, restaurants, lodging, campgrounds, and a variety of retailers and outfitters. Stretch your legs on the local trail system and stop in at the Charles M. Russell National Wildlife Refuge headquarters for visitor information.

Visit the National Discovery Center at 302 W Main Street in Lewistown. The Center features interactive exhibits about the prairie ecosystem and a film theater. Check americanprairie.org/national-discovery-center for hours and information.

TRAVELING TO AMERICAN PRAIRIE
arriving by plane and car

Airports: Billings Logan (BIL), Bozeman Yellowstone (BZN), and Great Falls (GTF) are the closest commercial airports.

Driving Times (hours):

Sun Prairie Unit: Billings – 4; Bozeman – 5.5; Glasgow – 3; Great Falls – 4; Havre – 3; Helena – 6; Kalispell – 7; Lewistown – 3; Malta – 1; Missoula – 8

PN Unit: Billings – 3.5; Bozeman – 4.5; Glasgow – 4; Great Falls – 2.5; Havre – 2; Helena – 4; Kalispell – 6; Lewistown – 1.5; Malta – 3; Missoula – 5

To Antelope Creek Campground From Lewistown

From Lewistown, take Highway 191 north for 72 miles. Antelope Creek Campground will be off the highway on your left, between mile markers 96 and 97.

For more information about travel conditions visit americanprairie.org/road-and-weather-conditions

See the back of this map for a QR code to a free digital GPS version of this map.

To PN From Lewistown

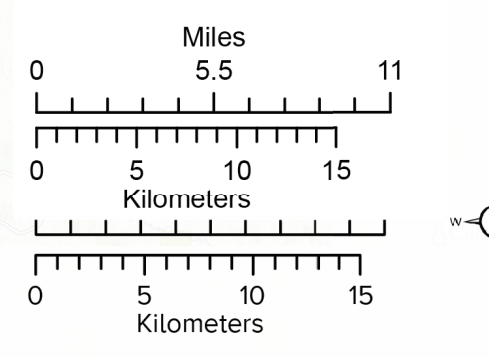
Travel 39 miles north of Lewistown to Winifred. Navigate to Main Street and travel through town, following the road as it turns to the right. Continue past the end of the pavement and bear right at the sign for the PN Bridge Road (MT-236). Follow the road as it turns left, then right again. After traveling approximately 10 miles from town, bear left (there is an old cabin on the right side of the road). Travel another 12 miles and then turn left onto the road located across from the access gate for the Dog Creek Area. Follow the road (MT-236) and the Judith River for 4.3 miles to a collection of buildings. PN visitors are welcome to stop by the Elk House porch where visitor maps, an emergency phone, non-potable water, and wireless internet are available.

To Sun Prairie From Lewistown

Travel north from Lewistown on Highway 191 for approximately 40 miles. At the T-intersection (Bohemian Corner), turn left to continue on Highway 191 through the Charles M. Russell National Wildlife Refuge. Approximately 21 miles after crossing the Missouri River, turn right onto the gravel road (immediately after mile marker 109). Bear left at the fork onto Dry Fork Road. Travel 26 miles to the T-intersection and turn left. After 3.5 miles, bear right at the fork in the road. Continue 12.7 miles to the next bend in the road and turn right. Travel 5.6 miles to arrive at Buffalo Camp, following signs along the way. Continue past Buffalo Camp to reach the Enrico Education and Science Center where an emergency phone is available.

**Dry Fork Road is not maintained (plowed) in the winter months. If traveling during a snowy season, please consider alternate routes: Midale or Regina Road.*

- American Prairie National Discovery Center
 - American Prairie Bison Unit
 - American Prairie Campground
 - American Prairie Hut
 - Other Public Campground
- American Prairie
- American Prairie Deeded Land
 - American Prairie Unit Boundary including grazing lease
- Public Land
refer to managing agency for rules and regulations
- Bureau of Land Management
 - State of Montana
 - Wildlife Refuge
 - US Fish and Wildlife Service
 - National Monument (BLM)
 - USFWS Wilderness



No warranty is made regarding the accuracy of this map. It is the responsibility of the user to determine land ownership and road status. If you would like to report an error on this map please email gis@americanprairie.org.
Service Layer Credits: Airbus, USGS, NGA, NASA, CGIAR/N Robinson, NCEAS, NLS, OS, NMA, Geodatos/teisen and the GIS User Community.